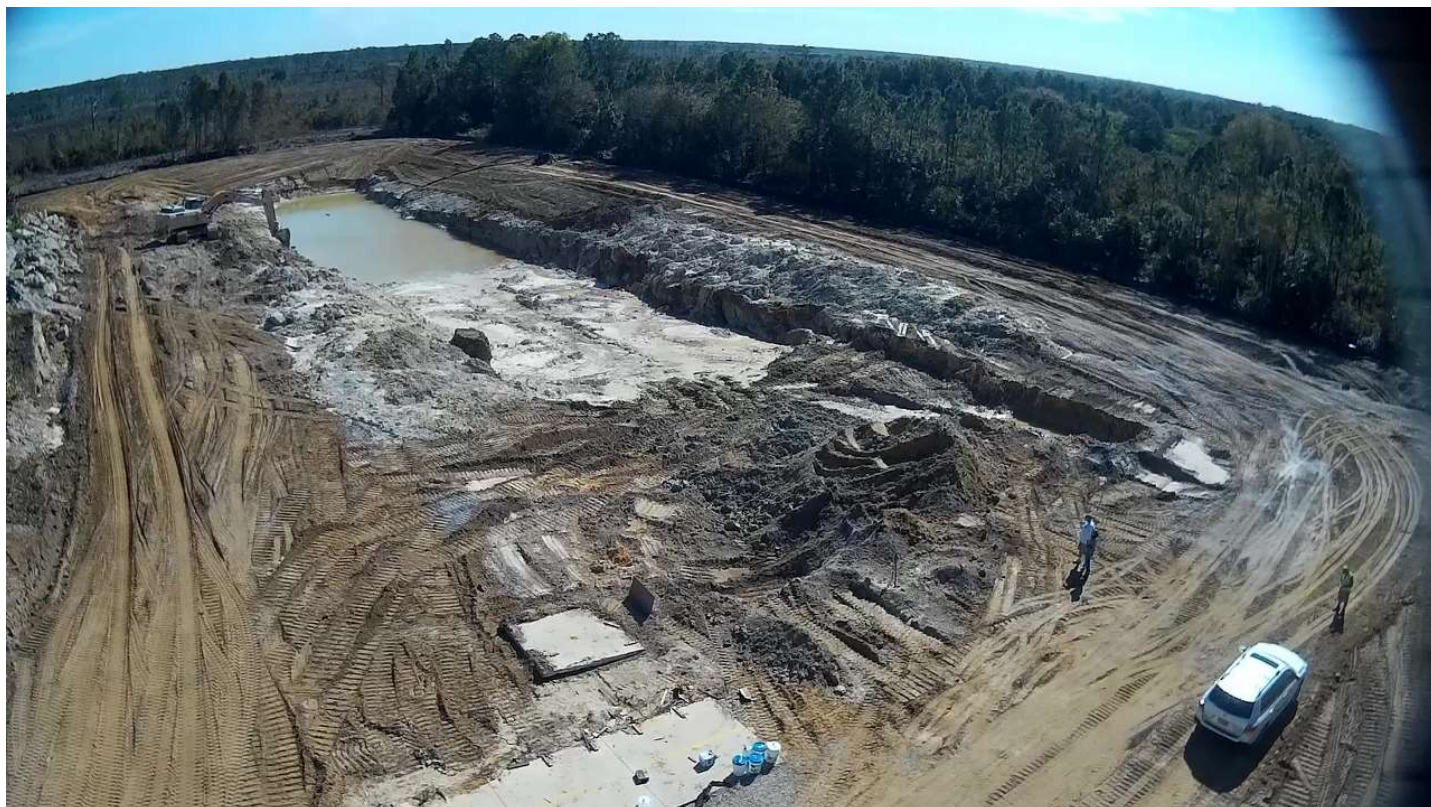


The extensive drainage system has been installed, including large pipes and collecting boxes, and covered with considerable fill. This raises the whole range several feet above the original ground level. (This drainage system of course isn't visible in these images.)

This will drain into the new retention pond ("stormwater lake" on the plans), which is being dug now (images below). The pond excavation has yielded a large quantity of rock coral, which is piled in rows for eventual use in the berms.

Pond Looking East:



Pond Looking South:



Looking Northwest:



Looking East:

